

Nishiki - 錦 -



SIZE: w93cm 12m
COMPOSITION: PAPER YARN (PULP)
COTTON · RAYON

Nishiki 錦

手紡ぎの風合いの、特徴的な「もこもこ糸」が豊かな表情を醸します。経糸には細くて荒目の糸、緯糸には紙糸と、糸になる前のスライバー糸に加え、特殊技法でわざと隙間をつくり、裏打ち紙の色と肌を「借景」とする遊び心を添えました。

The distinctive fluffy yarn, with its hand-spun texture, produces rich looks. Thin loose thread is used for the warp. The weft consists of paper yarn and sliver before it is spun into thread. A special technique was used to purposely create gaps, so that the lining paper and skin combine to form natural-looking scenery, adding a sense of playfulness to this wallpaper.

Nishiki

錦

思わず触感をくすぐられるユニークな質感。織物と裏打紙とが織りなす多彩な表情も楽しく、色もベーシックからポップまで、豊かに揃えました。

The unique texture almost seems to tickle the sense of touch. The colorful look achieved by the textile and lining paper is delightful, and there are a rich variety of color options, from basic to pop.



Nishiki



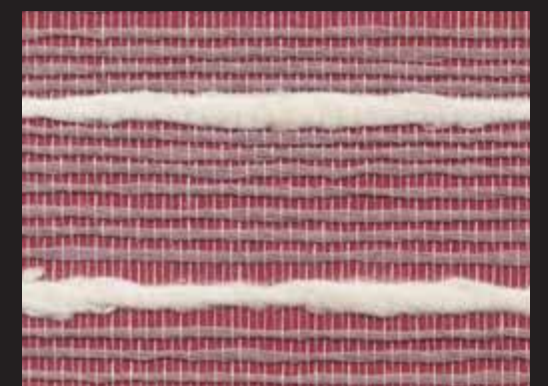
5605



5601



5602



5606



5604



5603